

CALLING
THE
FUTURE

CLEAF 50

今年是可丽芙 (Cleaf) 专注设计创新、致力于将原材料转化为家具与室内前沿表面材料的第50周年。

自1975年以来, 可丽芙始终以技术研发、创新设计为驱动力, 在美学与功能方面, 积极探索, 推动行业发展。

这一重要的里程碑, 不仅见证了品牌半个世纪以来的战略眼光、革新精神, 也彰显了可丽芙对未来持续探索的热忱。

Cleaf celebrates 50 years of design innovation, transforming raw materials into cutting-edge surfaces for furniture and interiors. Since 1975, research, technology and creativity have driven the company to redefine aesthetic and functional standards in the industry. This milestone marks half a century of vision, evolution and passion for the future.



可丽芙是一个家族的故事，一段融合传统与创新、饱含热情与坚持的创业故事。这是一个充满激情与挑战的旅程，见证了Caspani家族将这些美好品质传承并带向未来的信念与力量。

Cleaf is the story of a family that pursues an entrepreneurial path of tradition and innovation with passion and enthusiasm. An exciting and challenging story that sees the Caspani family carrying these values into the future.





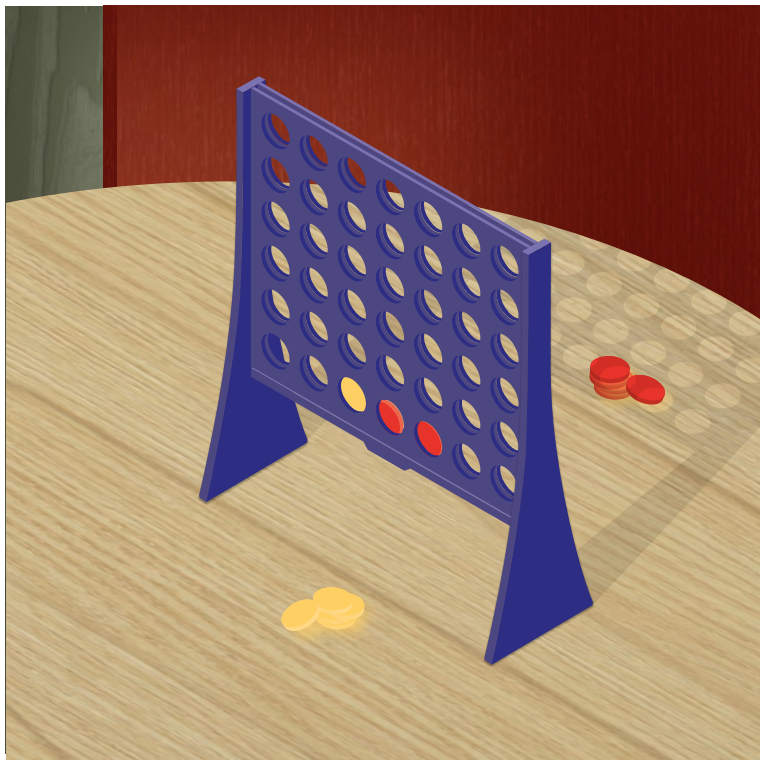
CALLING
THE
FUTURE

Calling the Future (预见未来), 展现了我们在传承品牌精神的同时, 积极拥抱创新与未来的愿景。电话亭, 作为时间穿梭的载具, 连接着过去与未来。使用可丽芙的创新材料打造富有灵感的家具与空间, 是我们始终如一的热情所在。我们不断探索, 只为让美成为日常生活的一部分; 而这段旅程, 也因有你同行而更加精彩。

在 CCube 展厅中, Vudafieri-Saverino Partners 将 20 世纪 70 年代标志性的 SIP 电话亭, 重塑为智能时代中的城市庇护所。这一装置艺术探索了一种全新的共享空间模式, 它既可以作为交流的场所, 也可以满足私密的独处需求。由可丽芙产品构建而成的城市庇护空间融合多项智能科技应用, 为数字时代的人们带来全新的公共空间感知方式。

Calling the Future embodies our ambition to embrace innovation while honouring our heritage. The phone box is the symbol of our voyage through time. Creating surfaces to craft inspiring furniture and spaces is our passion. Each day, we look for ways to bring beauty to the world around us. We are thrilled to embark on this journey alongside you.

Vudafieri-Saverino Partners' installation for the CCube transforms the iconic SIP phone box of the 70s into an urban shelter in the age of the smartphone. A new way of experiencing shared space through collective or private interactions. Actions linked to phone apps will be the occasion to bring to life four urban shelters made of Cleaf surfaces.

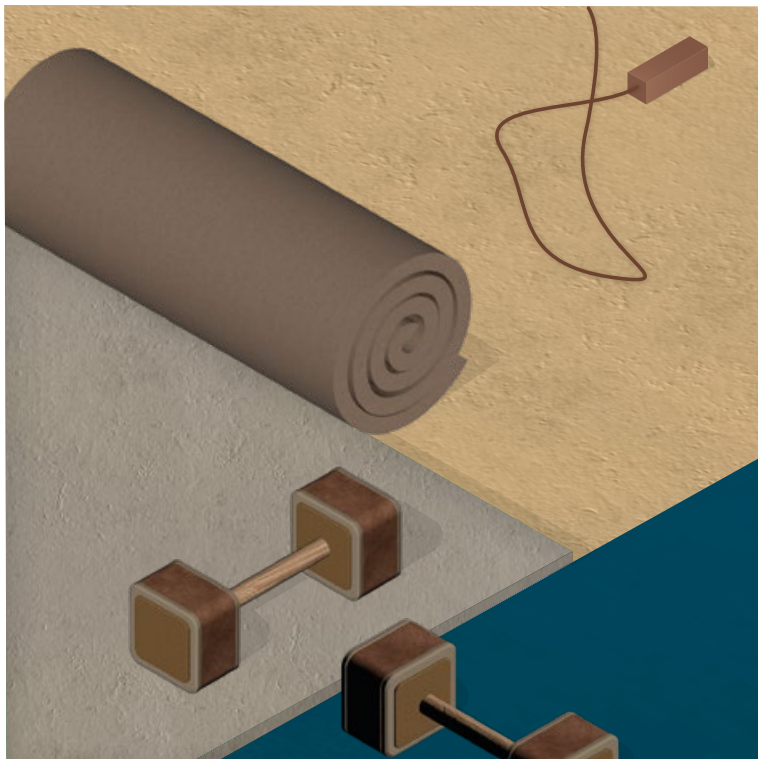


晴雨食光亭 OUTDOOR PAVILION

一座开放式的共享凉亭，可在阳光或细雨中，提供舒适的用餐与交流空间。

An open and convivial pavilion where you can enjoy a meal in the shade or sheltered from the rain.

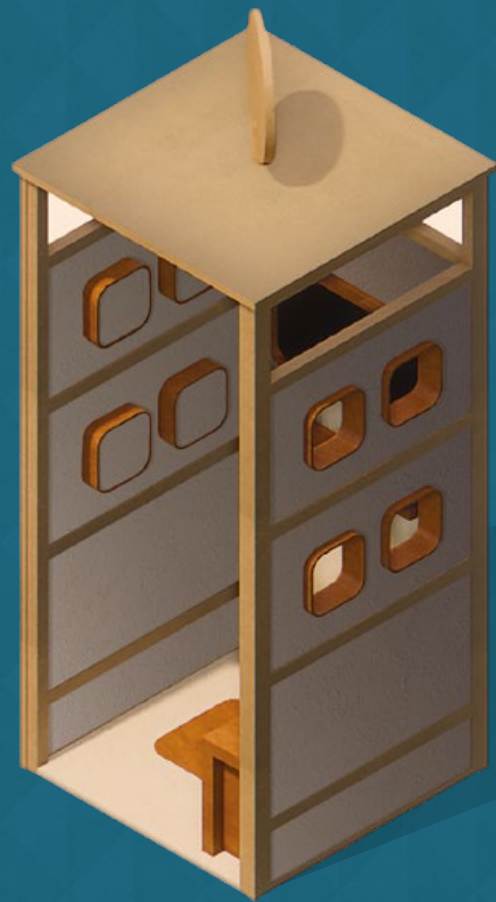




智慧体测亭 SPORT THERAPY

一座互动式更衣室，可测量身体指标、制定运动计划，并直接在周边户外区域实现相应的锻炼。

An interactive changing room where you can measure your physical parameters, plan your activities and exercise close to nature.



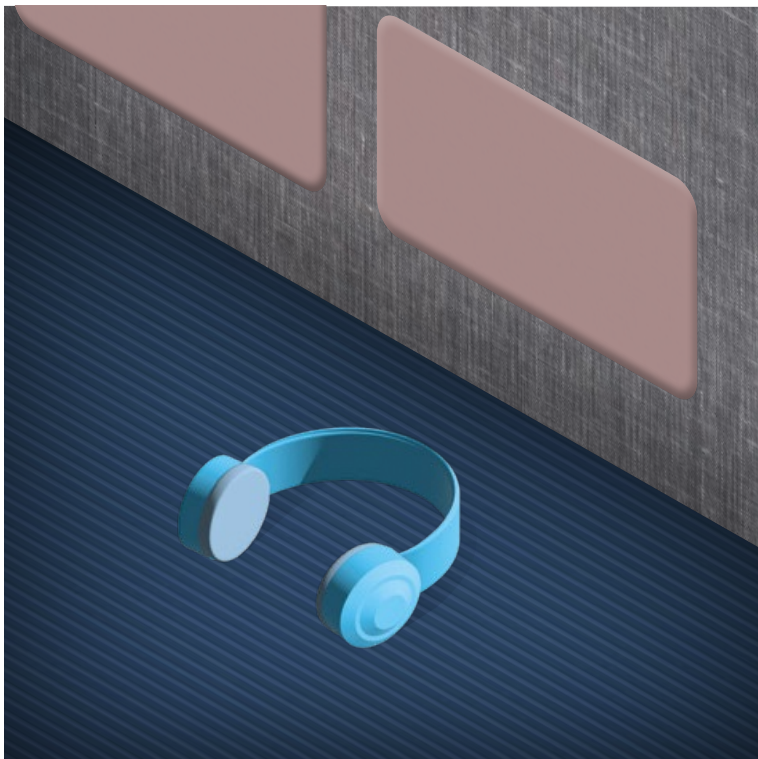


即刻办公亭 SMART OFFICE

一个适合数字会议与安静交流的理想空间。

An ideal space for digital meetings
and quiet conversations.

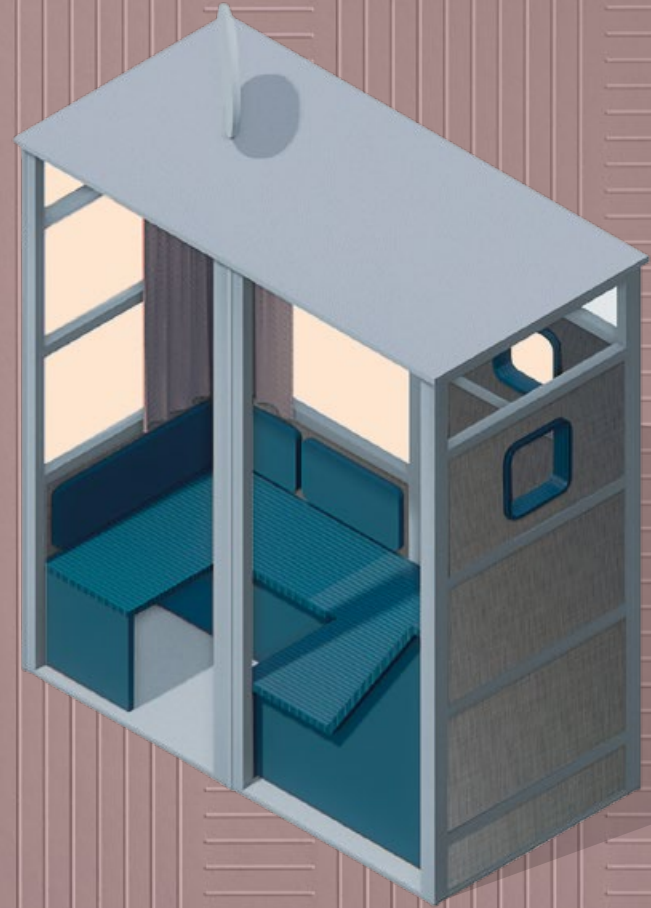




静音休憩亭 ACOUSTIC OASIS

一个私密而安静的空间，适合在这里小憩放松、聆听音乐，远离城市的喧嚣。

An intimate and quiet space where you can stop to relax, listen to music and isolate yourself from the noise of the city.





MATRICE

Matrice纹理是对可丽芙经典喷砂落叶松纹Matrix的全新演绎。设计上摒弃了传统的直线线条，转而采用富有动感、仿佛手工雕刻的不规则线段，使其更具现代气息。视觉上，哑光质感与细腻微光交相辉映，层次丰富；触感上，则如有机材质般温润自然。

The Matrice texture is a reinterpretation of the historic Matrix, which began life as a sandblasted larch. The design is made more contemporary by creating channels that are not linear, but dynamic and interrupted as if by hand. The visual effect is one of a matt surface enhanced by shiny micropores. To the touch, it feels like an organic substance.

饰面板
基材: 三聚氰胺板 / 密度板
厚度: 8 ~ 38 mm
规格: 2800 x 2070 mm
背部表面处理: Matrice

FACED PANEL
Support: chipboard or MDF
Thickness: from 8 to 38 mm
Format: 5600 x 2070 mm
Back texture: Matrice

防火板
基材: HPL
厚度: 0.9 mm
规格: 2760 x 2040 mm

LAMINATE
Typology: HPL
Thickness: 0,9 mm
Format: 2760 x 2040 mm

封边条
基材: ABS
厚度: 0.5 ~ 2.5 mm
规格: 12 mm / 卷
表面处理: Matrice

EDGE
Typology: ABS
Thickness: from 0,5 to 2,5 mm
Format: rolls from 12 mm
Texture: Matrice





NEBULOSA

Nebulosa星云流光纹细腻的微光点缀于哑光背景之上，带来灵动而精致的视觉效果，宛若宇宙间弥漫的气体、尘埃与云团，完美呼应其星云之名。视觉上充满律动，触感上柔和细腻，仿若轻盈云雾拂过指尖。

The Nebulosa texture is characterised by a series of shiny micro-details that contrast with the opacity of the background. The final effect recalls the interstellar clusters of dust, hydrogen and plasma from which it takes its name. A dynamic surface, extremely soft to the touch.

饰面板

基材: 三聚氰胺板 / 密度板

厚度: 8 ~ 38 mm

规格: 2800 x 2070 mm

背部表面处理: Nebulosa

FACED PANEL

Support: chipboard or MDF

Thickness: from 8 to 38 mm

Format: 5600 x 2070 mm

Back texture: Nebulosa

防火板

基材: HPL

厚度: 0.9 mm

规格: 2760 x 2040 mm

LAMINATE

Typology: HPL

Thickness: 0,9 mm

Format: 2760 x 2040 mm

封边条

基材: ABS

厚度: 0.5 ~ 2.5 mm

规格: 12 mm / 卷

表面处理: Nebulosa

EDGE

Typology: ABS

Thickness: from 0,5 to 2,5 mm

Format: rolls from 12 mm

Texture: Nebulosa

平面设计 —
Blackspace

颜色校对 —
ALT@ALuce

印刷出版 —
Grafiche Boffi

插画制作
CALLING THE FUTURE —
Francesca Gastone

Italy 2025
#预见未来

CLEAF CHINA LTD
可丽美（上海）贸易有限公司
上海浦东新区东方路18号
保利广场E座28层
电话: 021 6486 3274
邮箱: info@cleaf.cn

© Copyright 2025 CLEAF spa
保留所有权利

cleaf.cn