

livingsmall

CLEAF

可丽芙的表面研究为视觉与触觉带来了丰盈的感官盛宴。三种类型的产品——饰面板、防火板、封边条——构建了完美且协调的家具和覆盖系统。

Sbalzo 和 Taranta 是最新问世的两款表面处理纹路。

Cleaf's research on surfaces generates tactile and visual experiences. Three product types – faced panel, laminate, edge banding – create a perfect coordinated system for furnishing and covering environments.

Sbalzo and Taranta are the latest creations.



sbalzo

受手工木作启发的独特几何图案为Sbalzo纹理赋予了独有的特质，进一步增强了对三维立体效果的感知。

A geometric pattern inspired by artistic woodworking characterizes the Sbalzo texture. A three-dimensional effect that enhances the perception of depth.

饰面板

类型：刨花板, 密度板
厚度：8 至 38 mm
尺寸：2800 x 2070 mm
背部表面处理：Fiocco

FACED PANEL

Support: chipboard or MDF
Thickness: from 8 to 38 mm
Format: 2800 x 2070 mm
Back texture: Fiocco

防火板

类型：HPL防火板
厚度：0.9 mm
尺寸：2760 x 2040 mm

LAMINATE

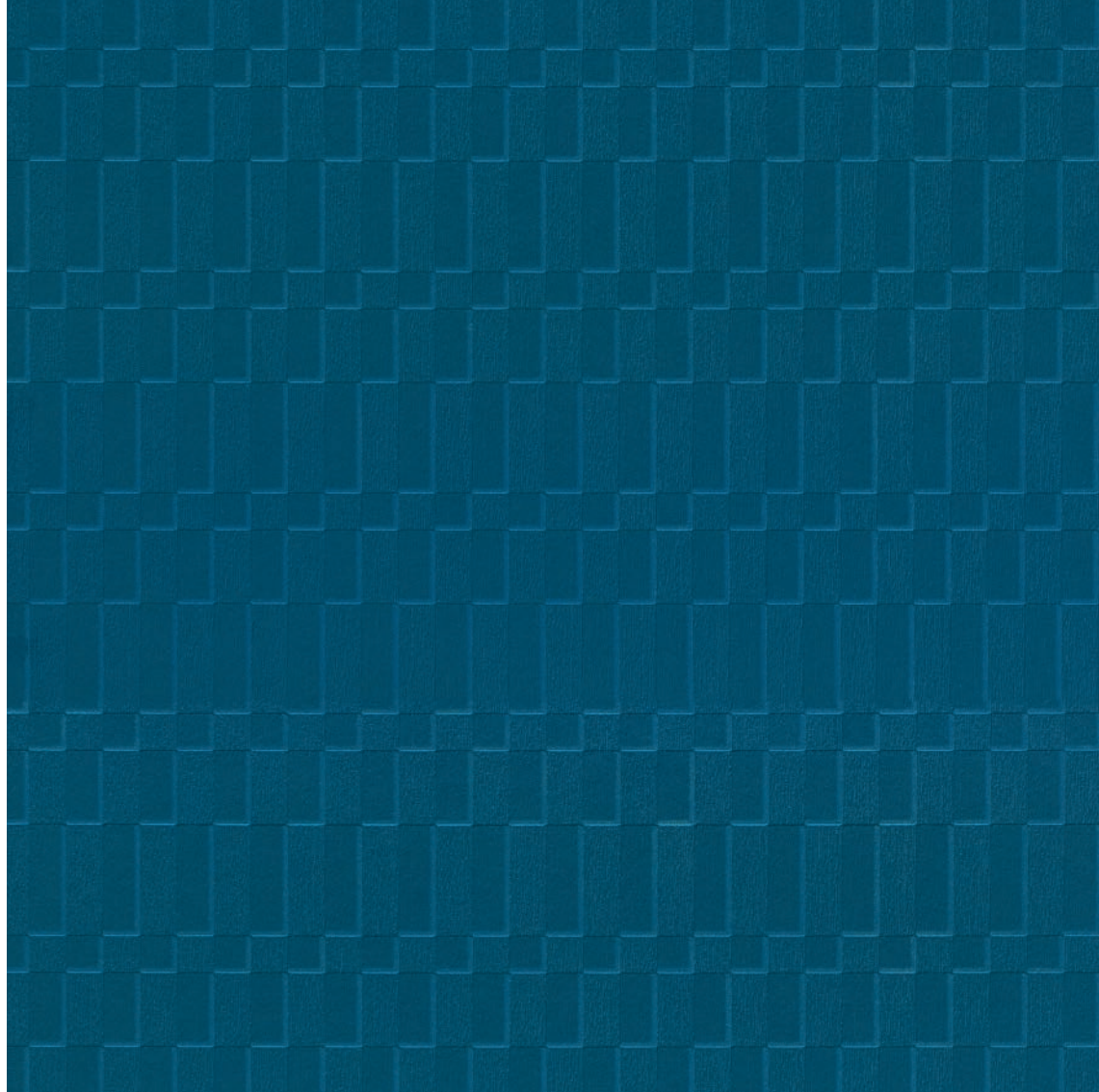
Typology: HPL
Thickness: 0,9 mm
Format: 2760 x 2040 mm

封边条

类型：ABS封边条
高度：0.5 至 2.5 mm
尺寸：12mm 起/卷
背部表面处理：Sbalzo

EDGE

Typology: ABS
Thickness: from 0,5 to 2,5 mm
Format: rolls from 12 mm
Texture: Sbalzo





taranta

Taranta的纹理效果让人联想到在普利亚地区开采的天然矿石;它的名字来源于这个地区著名的民间音乐节。

Taranta texture recalls the effect of the natural stone extracted in Puglia; in this area takes place the famous folk music festival which inspires its name.

饰面板

类型: 刨花板, 密度板
厚度: 8 至 38 mm
尺寸: 5600 x 2070 mm
背部表面处理: Taranta

FACED PANEL

Core: chipboard or MDF
Thickness: from 8 to 38 mm
Format: 5600 x 2070 mm
Back texture: Taranta

防火板

类型: HPL防火板
厚度: 0.9 mm
尺寸: 2760 x 2040 mm

LAMINATE

Typology: HPL
Thickness: 0,9 mm
Format: 2760 x 2040 mm

封边条

类型: ABS封边条
高度: 0.5 至 2.5 mm
尺寸: 12mm 起/卷
背部表面处理: Taranta

EDGE

Typology: ABS
Thickness: from 0,5 to 2,5 mm
Format: rolls from 12 mm
Texture: Taranta





livingsmall

在2024年米兰设计周之际，可丽芙提出了“小空间，大乾坤”的概念，旨在探索小型建筑的可能性。在这些项目中，空间的限制被视为实验的目的，用以展现对模块化工程的反思。

创新的工业设计和制造工艺，以及被广泛运用的室内定制，使得小型建筑成为可丽芙表面处理的理想应用场景。

四座小型建筑位于公司Ccube展厅内，由可丽芙与西班牙建筑工作室Inzink Design 合作打造，分别展现了可丽芙四种材质效果的表面处理：木纹、金属、石材和织物的潜在应用。

On the occasion of Milan Design Week 2024 Cleaf presents *Living Small*, a concept that explores small buildings. Projects in which the spatial limit represents an opportunity for experimentation and a reflection on modularity.

The innovative industrial process of design and fabrication stages, along with extensive interior customization, make small buildings an ideal context for Cleaf surfaces.

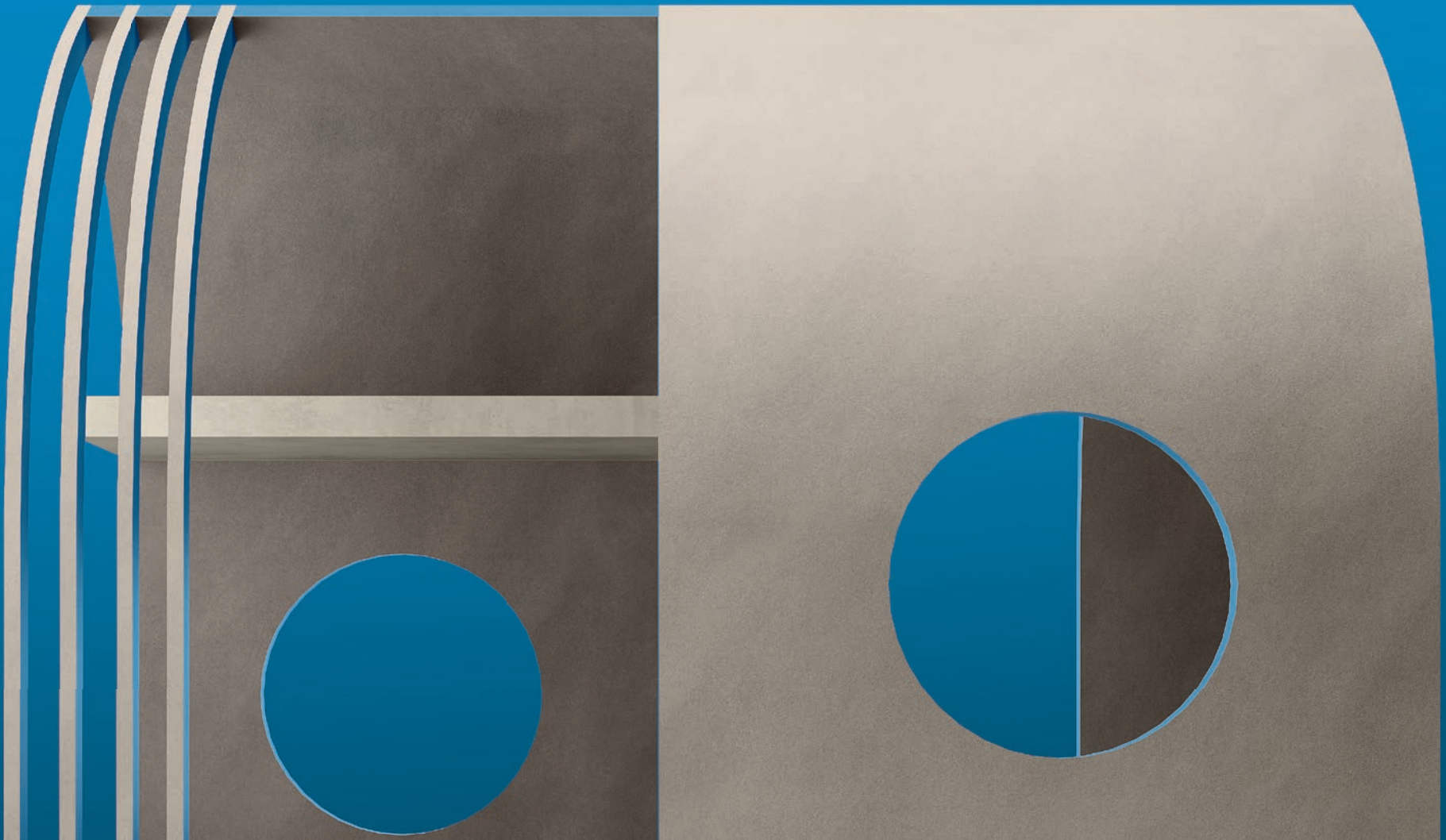
Collaboration with the Spanish architectural studio Inzink Design has led to the creation of four buildings, placed within the corporate showroom CCube. An exhibition to discover potential applications of Cleaf surfaces in four material effects: wood, metal, stone, fabric.



海滨小屋

一个一望无际凝视深蓝的地方, 由石材效果的产品打造而成。

A place to contemplate the infinity of the sea, made with stone-effect products.

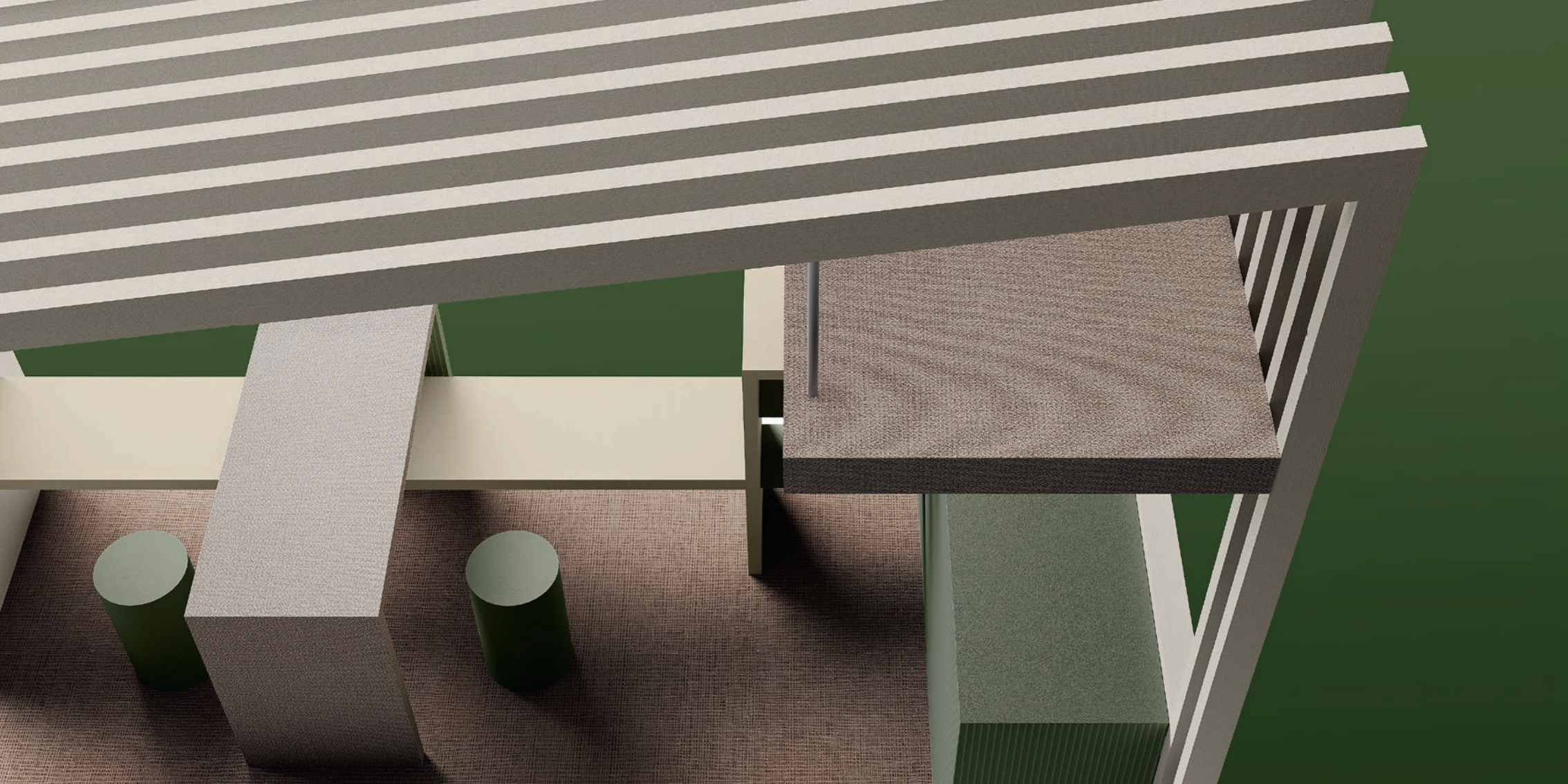




乡村农舍

一个聆听鸟语虫鸣的港湾，由织物效果的产品打造而成。

A refuge to listen to the industrious silence of the countryside, made with fabric-effect products.





山间小筑

一个征服高峰的起点或终点，由木纹效果的产品打造而成。

A point of arrival or departure to conquer the peaks,
made with wood-effect products.



城市胶囊

一个早出晚归铸造的蜂巢，由金属效果的产品打造而成。

A hive to shelter from the hustle and bustle of the city, made with metal-effect products.





可丽芙是一家专注于美学和技术创新的家具和室内饰面设计生产企业，潜心于意大利制造，可丽芙的全线产品：饰面板、防火板以及封边条，均由位于布里安扎工业区的四座可丽芙工厂生产，再经由家具制造商和建筑师带去世界各地，用于制造理想的工作与生活环境。

Cleaf is an Italian company producing innovative surfaces and solutions for the furniture and interior design industries. Faced panels, laminates and edges exclusively manufactured at production sites in Brianza are installed worldwide by architects and companies building inspirational spaces for living and working.

平面设计 —

Blackspace

颜色校对 —

ALT&ALuce

打印出版 —

Grafiche Boffi

LIVING SMALL 系列插画 —

Roberta Brambilla

ENVIRONMENTS 系列插画 —

Blackspace

3D 渲染 —

Terzopiano

Italy 2024

可丽美出品

a project-installation by Cleaf

CCUBE 项目制作 —

INZINK Design

#CLEAFLIVINGSMALL

CLEAF

可丽美（上海）贸易有限公司

上海市浦东新区东方路18号

保利广场E座28层

邮编：200120

电话：021 6486 3274

邮箱：info@cleaf.cn

© Copyright 2024 CLEAF spa

保留最终解释权

